

THE *Moreton Morrell* VILLAGER

April 2025

EASTER FUN AND CRAFT ACTIVITIES

When: Sunday, 13th April, 2-4pm

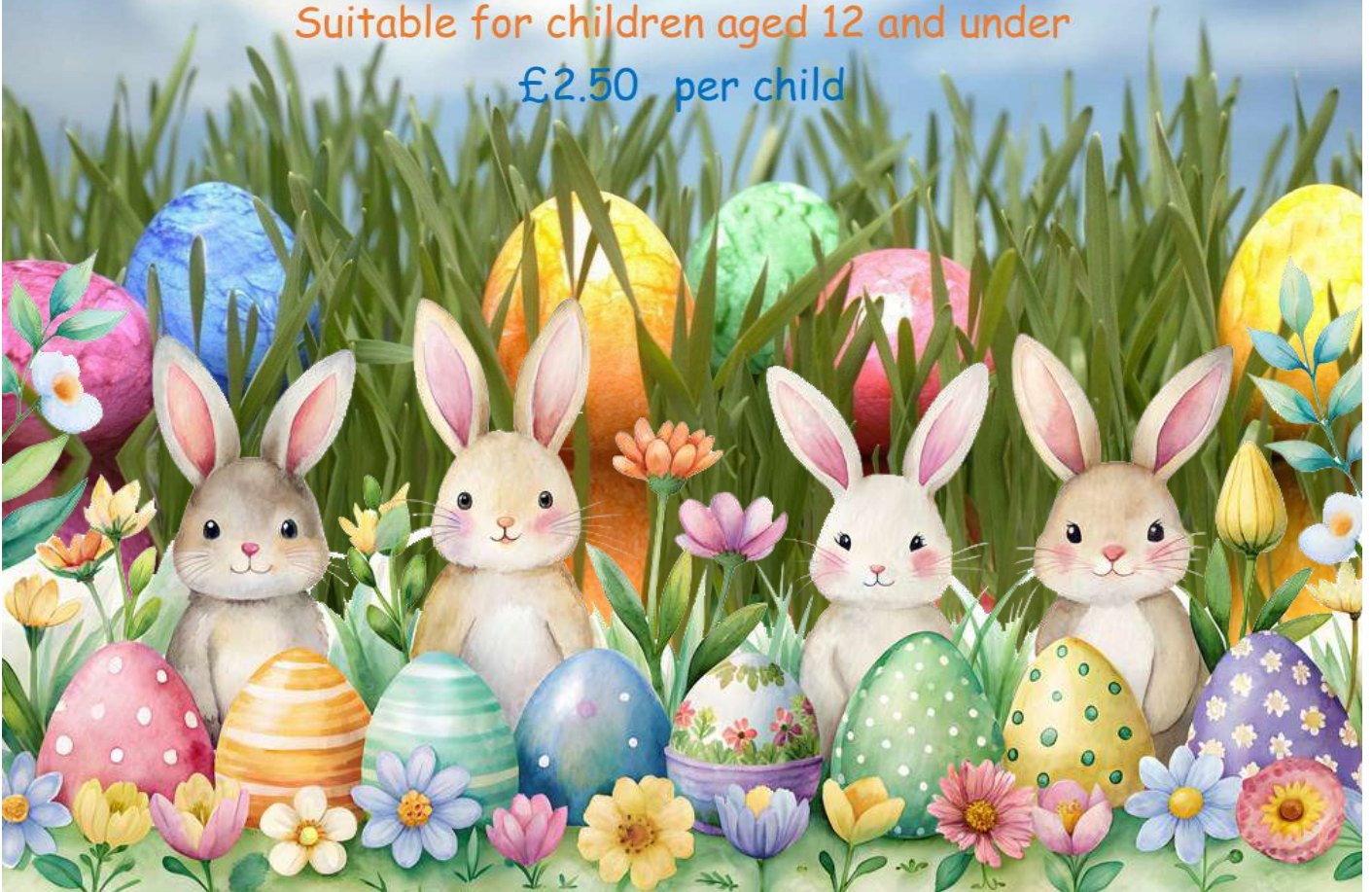
Where: The Room at Moreton Morrell
(behind the Church of the Holy Cross)

Activities: Craft activities, egg hunt and refreshments

All children to be accompanied by a parent or guardian

Suitable for children aged 12 and under

£2.50 per child



The Parish Council

Chair: Gerry Slora

Vice Chair: Eileen Edwards

Councillors: James Gordon, Robert James, Bernard Keavy & David Butler, Anne Parry

County Councillor: Penny-Anne O'Donnell

District Councillor: Anne Parry

The next Parish Council meeting

will be held at The Room on

Monday 19th May 2025 at 7.30_{pm}

and all are welcome to join

For more news from the Parish Council visit

www.moretonmorrell-pc.gov.uk



Find us on
Facebook

JOIN THE NEW

MORETON MORRELL & MORETON PADDOX

FACEBOOK GROUP

www.facebook.com/groups/moreton.morrell

This group replaces the Facebook page which many of you will be a member of. Please follow the new group to keep up to date with news, events and information about the village.

News from the Parish Council

VE Day Commemoration Tea

All villagers are invited to a VE Day Commemoration Cream Tea with Music event on Monday 5th May at The Black Horse, which is being supported by the parish council with a £1000 grant.

Further details will be available in due course on the parish council website, village Facebook and Nextdoor social media platforms.

Church Flower Show

The parish council has agreed to sponsor a window at the Church Flower Festival on 6/7 September.

Footpaths

Further work will shortly be undertaken by Cllr Gerry Slora with the help of Malcolm White on Farm Drive to cut back overgrown areas along this footpath and others, in addition to a range of works to improve stile access.

Cllr Simon Howe from Wellesbourne was in attendance and spoke of the footpath/bridle way that used to connect Moreton Morrell to Wellesbourne and is keen to work with the parish to facilitate access with the landowner which was greatly welcomed.

Moreton Morrell College Lambing Event – 5th April

Moreton Morrell College staff and students are abuzz in the run-up to the Lambing and Animals event on Saturday 5 April. It's a perfect event for families to view the baby lambs, the new rabbit and guinea pig enclosure, as well as visit local traders selling food and gifts in the marketplace.

Churchyard Lights

The parish council has agreed to fund an exterior lighting scheme for the churchyard which will greatly improve safety for villagers and visitors to both the church and for events at The Room during the dark evenings.

Fountain Repair

Villagers will be pleased to see that repairs have been undertaken to the fountain which is adjacent to the school.



News from the Parish Council

Speed Awareness/Road Safety

New signs directing horsebox vehicles in and out of the village have been erected in a bid to keep them away from the village centre. Thanks to Cllr David Butler, Cllr Bernard Keavy and Steve Routly for their help in this respect.



Wellesbourne Flood Group

The parish council has awarded a grant of £500 to the Wellesbourne Flood Group for the work they are carrying out to prevent excess surface water from Moreton Morrell parish exacerbating flood risk areas off the Newbold Road.

The date of the next parish council meeting, which includes the Annual and AGM meetings will be held on Monday 19th May.

A large, vibrant collection of crocheted flowers in various colors including red, yellow, purple, blue, green, and white. The flowers are arranged in a dense, overlapping pattern, filling the entire frame. The background is dark, making the colors of the flowers stand out.

Community Flower Making

Can you knit or crotchet?
Do you have any unwanted wool you could donate?

If the answer is yes to either of the above. Or you would like to learn and help us make some colourful flowers for the Flower Cascade we are creating for the Flower Festival on 6th/7th September then please contact me.

Lesley Maynard 07985403254

We can usually be found having a coffee/tea and a chat while we create in the Black Horse Pub in Moreton Morrell on a Friday from 2:30pm.

Any wool can be left in the Pub or contact myself or Sarah Irwin 07879820804 and we will arrange a pick up.

If you would like to Sponsor a Display for £25 for your business or village group then please contact us.

District Councillor Report - Cllr Anne Parry

News and Updates from your District Councillor

It's been a very busy month attending meetings, briefing sessions regarding the South Warwickshire Local Plan and providing support to local residents regarding their concerns about the proposed options for the 12 new settlements and 24 strategic growth areas. It is anticipated that the outcome of the consultation and the preferred options will be announced towards the end of this year. In particular I have expressed major concerns regarding proposed new settlement options near Bishops Tachbrook and Gaydon, as well as strategic growth areas in Bishops Tachbrook and Wellesbourne, which includes the household recycling centre in Wellesbourne.

Full Council

The council tax for Band D will rise by 3.05% from SDC, 5% by Warwickshire County Council and by 4.83% by Warwickshire Police. Moreton Morrell precept is £72.71 for a total of £2368.49 per annum – total precept to Moreton Morrell is £25,470.

Earmarked reserves will be used for the following projects:

Trees for parish councils - £50k
Western Relief Study - £250k
Avon Hydro Scheme £1.2m

Acquisition of housing to rent
£2.5m

Climate Change Fund 520k

Prostate cancer screening programme with Graham Fulford Trust for two years - £80k

Arden Street Design to release Windsor Street capacity - £100k

Stratford High Street

Pedestrianisation study - £70k

Business Conference - £50k

Implementation of projects - £500k

Community Group Bids for projects - £250k

Devolution

Proposed plans for Devolution is dominating the agenda and SDC held an Extra-Ordinary Meeting on 17th March for councillors to debate and discuss the proposals.

Whilst the county council elections are proceeding on 2 May 2025, this is likely to be followed by another election in April 2028 – so I shall be your ward member for an additional year!

Financial savings are at the heart of the devolution plans, which are being fast-tracked by the government, and the savings for a single unitary with Warwickshire are estimated to be £21 million and £18m for a South Warwickshire unitary.

District Councillor Report - Cllr Anne Parry

Whilst a South Warwickshire option would appear to be more favourable in view of the geography of Warwickshire, the numbers for SDC and WDC fall short of the minimum number of 500,000 residents, plus there is concern that adult social care and children's services would suffer both financially and operationally. However, more work is required and SDC will be developing a submission document to the Government in November.

It is also estimated that the change process towards Devolution will cost SDC around £2 million in view of the additional resources and consultants required to implement the programme.

Oaktree Close

SDC has installed bollards around

its piece of land in Oaktree Close in a further attempt to prevent any cars parking on this grassed area – however sufficient space has been left for access into the playing field. SDC has also renewed the licence for the piece of land adjacent to 12 Oaktree Close. I am still awaiting Orbit to install the remaining bollards around the green in Oaktree Close and continue to chase.

Garden Waste Service

Just a reminder that subscriptions for the garden waste green bins can be obtained by completing an online application via:

www.stratford.gov.uk

Cllr Anne Parry

Ward member for Wellesbourne North

Pick it up!

Whatever some people may believe, there's no such thing as the dog poo fairy. So dog walkers, bag that poo - any rubbish bin will do. *(This includes Box Field)*

Together let's put an end to this offensive, harmful litter.

Your Church in Your Community

As I write this, we seem to be in very uncertain times both domestically and internationally. Many people are suffering and tragically, in areas of conflict, many are losing their lives. In such times it is important to hold on to personal values and certainties. As a Christian, I am focussed on the coming of Easter when Jesus gave up his mortal life and then rose again as our saviour. Whether you believe or not, perhaps all of us in the run up to Easter can give time for reflection and thought on what truly matters to us, maybe your church or churchyard might be a good place to sit and do that. Why not join us for our Easter service – all are welcome whatever your beliefs. We are blessed to live in a lovely village with so much community activity. I for one pray that our leaders and policy makers may have the strength and courage to meet the current challenges and seek to make a better world.

John Moverley

Message from the Reverend Barry Jackson

People are amazing

Whilst travelling to Australia in the last month, I've had the opportunity to meet and strike up conversations with many different people. What I've been struck by is their wide range of different

backgrounds, jobs and careers: a woman who works in the Diversity Equity and Inclusion sector, a man who runs tree surgery business, a scuba diving teacher, a doctor, a Thai masseuse, an estate agent, an administrator, a project manager, a farm worker, a conservationist, a bus driver, an uber driver, an interior designer, and many people who work in the hospitality industry.

It was fascinating to hear their stories and find out how they got into their line of work. All those encounters got me into people watching, and whilst I was waiting in airports or sitting in cafes, I speculated about the stories of the thousands of people around me.

Sometimes the people in a queue ahead of us that are taking their time to make an order, or are dawdling and taking up the whole pavement when we're in a rush, or blocking the items we want in the supermarket can seem like an inconvenience. They are just obstacles that prevent us from getting on with our day. But when we stop to think that behind the eyes of every person we see, there's another consciousness looking out on the world, another set of experiences, another wealth of stories, of times of joy and sorrow, hope and despair... then the people around us can

Your Church in Your Community

become fascinating and wonderful.

If we're not careful, then the challenges we face in our lives and the fears we may have for an increasingly unstable world can make us become more inward-looking and less aware of the lives of the people around us and in the wider world. We stop seeing them as human beings, and they become either a means to help us or obstacles in the way of us achieving what we want. That mindset just adds to the problems in the world, as it's the key reason the world is in the mess that it is.

If we want to play a part in healing our world, then it's a helpful start to recognise the beautiful and amazing diversity in the people around us. We are all made in the image of God (Genesis 1:27), and despite our many mistakes and failings, we are all still unconditionally loved by God... even if we do take too long to make up our minds about what to order!

It's that unconditional love that we celebrate in the Easter story. Jesus taught that no matter what we have done (or not done), we are unconditionally loved by God, and his life, death and resurrection underline that fact; even if we reject God and kill him,

he still comes back offering forgiveness and hope.

My prayer for all of us, as we navigate these difficult times, is that we would take time to recognise the humanity of all people, to celebrate it, love it, and respect it. And that in doing that, we may become part of the healing needed in our beautiful but broken world.

Rev Barry Jackson

Easter Services

There will be a service at Holy Cross on Easter Day, 20th April at 10.30am, led by the Prime-Time team along with our great friend, the Venerable Brian Russell. I hope as many as possible can join us for this service with opportunity for refreshments afterwards.

Pocket Park

It is so good to see how much the Pocket Park adjacent to the churchyard is developing and bringing together all our community including school, church, college, gardening group and more. Recently we have installed swift boxes and much more is planned. Please do support the Park and take time to enjoy this valuable village asset.

News from your church

The Church at Moreton Morrell continues to enjoy good

Your Church in Your Community

attendances at our All Age service on the 1st Sunday of each month led by Rev Brian Russell, and the less formal Prime Time service on the 3rd Sunday. We have welcomed some new attendees recently and It is always great to see them and chat over refreshments afterwards.

The arrival of Rev Barry Jackson and his team is rejuvenating links to the primary school, and there are several new community initiatives planned. He has also initiated a morning prayer event on a Saturday, once a month. If you have anyone that you would like to mention in such prayers, there is a prayer tree in the church. Just fill out a name and/or message and place it on the tree.

A special Raster event is being held in The Room on Sunday 13th April 2-4 pm and hopefully will attract families and children to the Church and Churchyard. Activities will include Crafts and an Egg hunt.

A recent service remembering Mary Mills was extremely well attended by family and friends and led by Rev Matthew from Kineton in a very kind and sensitive manner. Up and coming Church related events including flower workshops and craft fairs which will be advertised separately in the Villager

magazine. We hope to see as many as possible at our Easter Sunday service led by Brian Russell and the Prime-Time team.

In terms of housekeeping, work is in progress to improve the Church path lighting, and expert advice is being obtained regarding the Church roof and walls. The church is due to have its five-year inspection and there is no doubt roof and wall repairs will be needed and costly. Fund raising will be a challenge but one I am sure our community will rise to the challenge given the church's central role in village life. Finally, the Spring Churchyard clean-up is planned for 5th April. All volunteers are welcome, and refreshments will be available. Any queries relating to services or other church matters can be directed to John Moverley, Church warden.

Clive Irwin

Key dates for your diary at Moreton Morrell

5th April – Churchyard working party – all volunteers welcome (Coffee and cake as a reward!)

6th April – First Sunday All Age Service (Passion Sunday) 10.30

13th April – Easter Crafts and Egg Hunt

20th April – Easter Sunday Service

4th May – First Sunday All Age Service 10.30

Your Church in Your Community

17th May – Tabletop Sale

18th May – Prime Time Informal Service – 10.30

18th May – 11.30am – Annual Parochial Church Council meeting after Prime-Time Service

21st June – Save the Date for Summer Fete

Normal Service dates in April and May

We will continue to publish in the Villager dates of services across the four parishes in Mid Fosse as well as at our own church and these are as follows:

6th April – 9am Lighthorne (morning service), 10.30am Moreton Morrell 5pm Newbold Pacey (evening service)

13th April – 10.30am Newbold Pacey (communion), 6pm Lighthorne (evening service)

18th April – 2pm - Good Friday Service at Newbold Pacey

20th April – 8.30am Newbold Pacey (morning prayer), 10.30am Moreton Morrell, 10.30am Chesterton (communion)

27th April – 8.30am Newbold Pacey (morning prayer), 10.30am Lighthorne (communion)

4th May – 9am Lighthorne (morning service), 10.30am Moreton Morrell, 5pm Newbold Pacey (evening service)

11th May – 10.30am Newbold Pacey (communion), 6pm Lighthorne (evening service)

18th May – 8.30am Newbold Pacey (morning prayer), 10.30am

Prime Time Moreton Morrell, 10.30am Chesterton (communion)

25th May – 8.30am Newbold Pacey (morning prayer), 10.30am Lighthorne (communion)

IMPORTANT Electoral Roll

Every parish has an electoral roll. This demonstrates the support for the church in the community and people on it can vote at the Annual Church Meeting which in 2025 will be held on the 18th of May. Being on it is also one of the eligibility requirements for standing for election to the Parochial Church Council. Every five years an entirely new roll must be prepared, and everyone who wishes to remain on the roll must reapply. This is to happen this year here at Moreton Morrell and so it is very important. A good electoral roll shows the value put on the church in our community. If you would like to be on the roll, please do email me. I will then pass this on to Nicola Atkins who is co-ordinating the process and she will forward further information.



From the Allotments

The allotments are springing back to life with increasing activity, preparing for sowing and planting. Some indeed have already started sowing and planting; others are cultivating and digging. It has been quite a mild albeit wet and grey start to the year but, as I write, the sun is streaming through my window – perhaps Spring is finally here.

As always, I look forward to the new growing year with optimism. Perhaps this time all my plants will flourish; I will control the weeds and pests and all will run smoothly. Of course, I very much doubt this but that is what makes for an exciting world, I think. What I do know is being on the allotment will provide healthy exercise and appreciation of nature all around. I look forward to it.

I am pleased to report that we have at least one new allotment holder this year and hopefully two. That will mean full

occupancy but if you remain interested do not despair, it may still be possible to persuade existing holders to release areas of their plots in Brook Lane. So do contact me to discuss. If nothing else, you will be at the front of the queue on the waiting list.

Finally, a few lines of verse. My update would not be complete without a poem!

Through the gate and into another world

Leaving my cares on the outside

Breathing in the air of my sanctuary

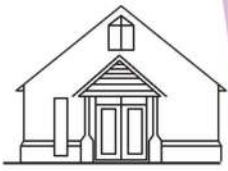
That's where you'll find me,

When life feels hard...

John Moverley

John@dunmovin.co.uk

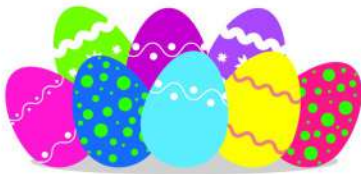




The Room @ Moreton Morrell – Spring Events

SUNDAY 13TH APRIL

Children's Easter Crafts and Egg Hunt



Join us for an Easter Celebration, fun crafts for children (up to 12 years) and delicious refreshments for everyone followed by an egg hunt – please stay with your child
2.00 – 4.00 p.m. – £2.50 per child

FRIDAY 2ND MAY

May Bank Holiday Quiz Night



Start your Bank Holiday weekend with a battle of wits with our fun and lighthearted Quiz Night.

Teams of up to 6 players
£5 per person including nibbles
BYO drinks – 7.30 p.m. start

SATURDAY 10TH MAY

Table Top Sale



Declutter and make some extra cash at our Spring Clean Table Top Sale – book a table and sell your pre-loved items.

Tables – £10.00 inside & £8.00 outside

Places are limited so book your table via the QR Code below and turn your clutter into cash.

10.00 a.m. – 1.00 p.m.

For Quiz Tickets contact nicolaatkins@gmx.co.uk
Use the QR Code to book a table at the Table Top Sale





The Room
At Moreton Morrell

TRAMM

Calendar 2025

Fundraising and Community Events

Sunday 13 April	Children's Easter Crafts
Saturday 17 May	Tabletop Sale
Friday 20 June	Mid-Summer Quiz Night
Weekend 6-7 September	Flower Festival
Sunday 12 October	Autumn Craft Fair
Monday 1 December	Wreath Making
Sunday 14 December	Carols in the Churchyard

Regular Bookings and Activities

First Monday each month	Gong Bath
Second Monday each month	Gardening Club
Selected Tuesday lunchtimes	Tasty Tuesdays
Every Tuesday evening	Village Choir
Every other Thursday Evening	Meditation Circle
Thursday 1 May	Local Elections

Visit www.tramm.co.uk for more information

Available for hire from £12 per hour

Find us behind The Church of the Holy Cross,

Moreton Morrell, CV35 9AL



Join Us for Tasty Tuesday!

Every other Tuesday at **The Room behind the Church in
Moreton Morrell 12:30 – 2.30pm**

Come and enjoy a **FREE** community lunch.

We'll be serving **piping hot soup, crusty bread, and delicious
homemade desserts**, along with tea and coffee.

- Drop in for a coffee with friends
- Enjoy a warm, welcoming atmosphere
- Use our space to work – **FREE Wi-Fi** available

Upcoming Dates

25th March | 8th April | 29th April

13th May | 3rd June | 17th June

Everyone is welcome

Whether you're here for a meal, a chat, or a place to work.

For more information, email Tracy at:

Tracybenbow66@gmail.com

We look forward to seeing you there!

Nature Watch

It's always sad to see the Snowdrops fade, but it's always nice to see the Daffodils arrive. Honey Bees and Bumbles are back and buzzing again. I've seen the yellow Brimstone butterflies fluttering by several times now and saw my first Ant of the year this morning- that's mid-March as I scribble this. The Green Woodpecker will be waiting for the Ant explosion, beaks and long tongues at the ready.

Hazel Catkins are done having pollinated the tiny red flowers on the same twigs to bring Hazel nuts for later in the year. The white blossom of the Blackthorn takes over many a hedgerow. Hawthorn will follow before the end of April. So nice to see the fresh green leaves of the Hawthorn quickly spreading even in the cold. Each species having its own time through the year to get its best chance of pollination and keeping Bees and insects fed over a long period.

Now my favourite Jackdaw, the one that feeds from my hand, always nests with its mate in the chimney of next door's outhouse. There are plans to restore the place so the chimney might go and then reappear. I've put up a replacement nest box on the

cottage so they don't lose their nest site. The two Jackdaws had such a day of excitement when they discovered it, going in and out and tapping loudly on the insides. It looked like a success but then they lost interest and haven't looked since. Oh well, they know where it is; up to them now.

The pair of Red Kite are still around us every day to a point that they seem commonplace now. I'm loving their call of one long flutey note followed by three short ones. Be brilliant if they nest in the park. There's a tall mature Pine just inside there that may be perfect for the job.

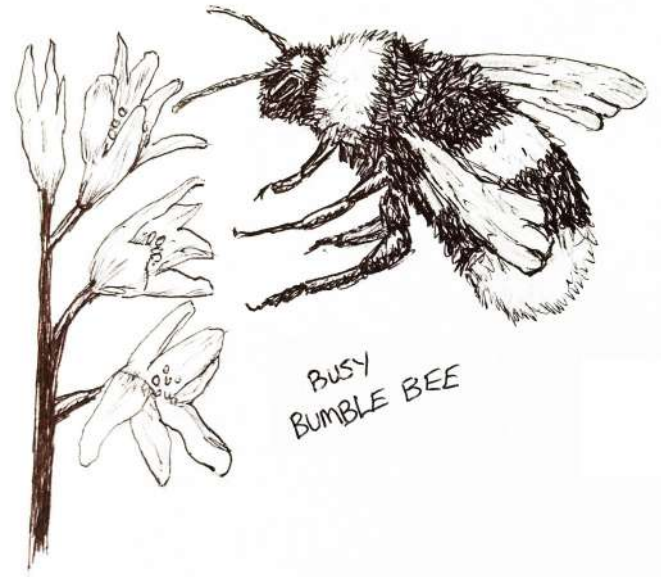
So the Red Kites became extinct in Britain in the 1870's due to persecution. They were reintroduced in 1990 with only 13 birds that were flown in by British Airways from Spain. By 1996 there were at least 37 breeding pairs in southern England. Now they think there are between five and six thousand breeding pairs spreading across the country. Now that's a plan that came together well!

The Muntjac still calls in for breakfast and often late afternoon

November Nature Watch

tea, sometimes with the baby, mostly not. The other Sunday I was making alterations at the bottom of the garden, involving weeding and spreading wood chip. When I'm down there I usually am joined by two Robins so I take a jug with some sunflower hearts in as a treat for them. I stopped for a rest, as you do, and moved back a little. I looked at my achievements which didn't amount to much, when in she came, my Muntjac. She couldn't resist having a look at what I'd been doing. If I don't make any sudden movements she's fairly confident with me now. She walked around the wood chip

sniffing, had a look at the fork and then noticed the plastic jug with some Sunflower seeds at the bottom. In went her nose and she enjoyed a treat, then off she went. 'Tis a privilege being that close to a wild deer.



Moreton Morrell is on

 **Nextdoor**

Discover your neighbourhood!

Visit [nextdoor.co.uk](https://www.nextdoor.co.uk) or download the app

Nature on the Move in Moreton Morrell

There's a real wildlife buzz building in Moreton Morrell and neighbouring villages, as local volunteers and groups, with the support of Warwickshire Wildlife Trust (WWT), continue to make a positive difference for nature on our doorstep.



The wildlife pocket park next to the church is coming to life – pollinating plants are starting to bloom, there are fresh signs of moles settling in, and a blue tit has already been seen scoping out one of the new nest boxes! The park is now home to bird, bat, and hedgehog boxes, all expertly built and installed thanks to the fantastic efforts of Ron Cleaton, students from the college, and pupils from Moreton Morrell Primary School.

Just this week, swift boxes were installed high up on the church. Swifts are remarkable birds that journey thousands of miles from sub-Saharan Africa each year,

and we're hopeful they will start checking out their new homes this summer, ready to nest in 2026.



None of this would have been possible without the generous support of the Parish Council and The Addington Fund, and a special thank you to Richard Lee of Richard's Builders, who kindly supplied a cherry picker and took on the challenge of installing the swift boxes – no easy task!

Other highlights include hedgerow planting at the school, and regular litter-pick walks across three villages. Plans are also developing fast, with WWT and

Nature on the Move in Moreton Morrell

Fosse MAT Trust working alongside us to create wildlife-friendly spaces and educational activities in five villages, churchyards, and schools. We're also collaborating with Warwickshire College Group to hopefully open and enhance a 2.3 km circular wildlife walk through their estate, bringing even more opportunities for people to connect with nature. With UK wildlife facing continued pressure, from habitat loss to declining species, these local efforts are helping to turn the tide. It's heartening to see such strong community spirit making space for nature to thrive.

Next projects "hedgehog highway" and more Swift box locations. Watch this space and the village Facebook pages for he involved in the coming months.



Newbold Pacey & Ashorne WI

In FEBRUARY we welcomed Nicki and Andy from Safeline, a Warwick based charity offering counselling and support services for anyone affected by sexual abuse or rape. Created as a non-profit organisation in 1994; support, counselling, therapy and listening is provided by this charity's trained staff and volunteers. An educational and emotional evening which provoked interesting discussion.

In MARCH we had almost a full turnout of members when we spent the evening creating spring/Easter floral wreath decorations led by our own floral enthusiast Sarah Irwin. The hall smelled like a florist's shop and was full to bursting with foraged greenery, bunches of daffodils and tulips. As always when everyone is given the same materials, the finished results were completely different! A fantastic evening and lots of new skills learned.



Our craft groups continue to meet on Tuesdays with knit and natter in the morning and trying out new crafts in the afternoon. We have tackled crochet; iris folding Easter cards and will soon be making fabric

quilted baskets. Our Walking Group has tackled the canal tow paths around Stockton and more recently Ryton Pools and through Bubbenhall Woods.



Our centenary wall-hanging is back on display in Ashorne Village Hall. Do take a look at this collaborative item created by members to celebrate 100 years of WI activity in our Parish. A variety of craft techniques have been used to interpret our local landmarks and wildlife.

MARCH also saw me visiting the Warwickshire County Records Office to lodge a batch of our WI meeting and committee records from 2014 back to 1967. Also, similar documents from the 1980s for the now closed Moreton Morrell WI. These records form a valuable social history of rural life and are

Newbold Pacey & Ashorne WI

regularly accessed by sociologists and researchers.

Looking to APRIL, our speaker is local author, Anne Harrison. She spent her childhood in care and will be talking about her life experiences and latest book 'Call Me Auntie.'

We are always pleased to welcome new members. We meet on the 2nd Thursday of each month, 7:30pm – 10pm in Ashorne Village Hall. Our membership years starts in April. Subs are £50 for a year of speakers/workshops and enjoying the company of like-minded women. Or come as a guest to try us out, £5 per meeting including raffle, homemade cake and a cuppa.

Our monthly Community Coffee

Mornings are as popular as ever so if you are passing Ashorne Village Hall around 10am on the first Saturday of the month, do pop in.

Contact Trish by phone for a chat or email: npandawi@gmail.com if you want to find out more.

Trish Handsley:

01926 651978 / 07919 392588

Newbold Pacey & Ashorne WI

npandawi@gmail.com

Facebook:

Newbold Pacey & Ashorne WI – Warwickshire

Instagram:

@Newboldpaceyandashornewi

Carers4Carers



Omega...
ENDING ISOLATION | ENDING LONELINESS

Finding support through supporting each other

Carers4Carers monthly meeting held at Kineton Village Hall, the fourth Friday of each month from 10:30 am to 12:00 noon. We'd love to welcome you to our carer support meeting for refreshments, chat and mutual support.

- Friday 25th April: We'll be getting "creative" again with paints! Absolutely no artistic skill needed!?
- Friday 23rd May: Relax with a mini hand massage and learn about WRCC Community Food Fleet, our local not-for-profit "meals on wheels" service.

Please bring along your loved ones - they can join our Companionship Group while we meet.

For further details about our carer support group or help with transport arrangements to/from our meetings, please contact Gillian on 07947 893504, send an email to kcarers4carers@gmail.com, or explore our website www.carers4carersonthefosse.org.uk.

Moreton Morrell Gardening Group

At last we are seeing signs of spring with the daffodils flowering and some nice sunny days . It's good to get out in the garden but beware the late frosts which are still a feature this time of year.

At our March meeting we had an excellent talk on year round colour in the garden from Chris Day the Publicity Manager from Buckingham Garden Centre. I think we all left inspired but putting all that good advice into practice is another matter!

In April, we are having our first outing of the year to the beautiful gardens and arboretum at Cedar House in Wasperton . The visit is on Monday 14th April leaving Moreton Morrell village at 1.30pm to start a tour at 2pm. The gardens should have a wonderful display of spring flowers, so let's keep our fingers crossed for a sunny day. Please contact me if you wish to attend

or need transport. Refreshments will be provided and there is a modest entrance fee payable on the day.

Our May meeting is back in the Room at the Church on Monday May 12th at 7.30pm when we have a talk from a guide from RHS Wisley on an insiders view of these beautiful gardens. Finally, on Sunday 29th June we have our long awaited visit to the RHS Wisley gardens. All garden club members will get free entry and transport is available for 16 in a minibus on the basis of first come first served. Please let me know if you wish to join us and to secure a place on the bus a £5 deposit is required.

A busy few months and lots to look forward to . New members always welcome, just come along £25 for a year or £5 for a one off attendance.

Happy Gardening!

Eileen Edwards (Chair)

FOR SALE

Golf Club set of Wilson Steel Fat Shafts

Reasonable offers to:

Ron Cleeton - 07485 659490

Transport

Dial a Ride UBUS service in Moreton Morrell

The UBUS dial a ride community transport service operates in Moreton Morrell and surrounding areas on Mondays, Wednesdays & Fridays between 09:30 - 14:30.

UBUS is available to anyone who struggles to access public transport due to mobility issues, health problems or due to infrequent or no public transport.

Travel locally or into Stratford upon Avon to go shopping, visit friends or attend social groups.

Single journey fare: £2.90 | Return fare: £5.80

To register with UBUS or for more information please call 01789 264491 between 09:30 - 14:30 on weekdays.



COMMUNITY TRANSPORT SERVICE

Our volunteer drivers can take you to medical appointments, lunch clubs, groups, activities and to visit family and friends.

01789 262889

transport@vasa.org.uk



Areas covered: **Stratford, Warwick, Leamington Spa, Kenilworth, Southam, Alcester, Shipston & surrounding villages.**

vasa

reducing isolation within our communities

RELIABLE SERVICE

All our volunteer drivers are enhanced DBS checked, referenced and carry ID.

WHAT DOES IT COST?

You pay your volunteer driver **45p per mile** and a **£3 admin fee** to help us sustain the service. **Two hours of waiting time** is included in the cost of your booking.

HOW TO BOOK A JOURNEY

Our booking line is open Monday to Friday between 9.30am & 3pm.

01789 262889

transport@vasa.org.uk

WE NEED MORE VOLUNTEER DRIVERS!

Have you got some spare time during the day? Could you help this invaluable service in your community? You can choose to do as many journeys as you like each month. 45p mileage costs paid.

Call 01789 262889 or email volunteer@vasa.org.uk.

Supporting Stratford District Residents since 1979. Charity No: 4067584



HJ DÉCOR: PAINTER & DECORATOR, Interior & Exterior work undertaken

Free Estimates

Reasonable prices and friendly service

No job too small

Lyndon Bufton

Mobile: 07531005579 Phone: 01926 737079

We need your clothes and shoes

Don't forget the school has a hungry clothes monster... or a recycling bin if you prefer!

Have your children outgrown their clothes or shoes or perhaps you need some space for your summer wardrobe! If you have any bedding, clothing or shoes that no longer fit or you simply no longer want or can be bothered to repair! why not feed the blue bin located opposite the main reception entrance to school.

The bin is emptied by an external company and the school is paid an amount depending on the weight of the clothing.



The Silver Line is a helpline for older people that offers information, friendship and advice 24 hours day, 365 days a year.

Originally founded by Dame Esther Rantzen, it is the only national, free and confidential helpline for older people in the UK.

The Silver Line also offers telephone and letter befriending by matching up a Silver Liner to a volunteer for regular conversation.

So if anyone is lying awake at night - or feeling lonely at anytime - or is worried about a problem that they have - and think that a chat with someone friendly who cares might help, **please call The Silver Line on 0800 4708090** www.thesilverline.org.uk



Stuck for transport for your group?

Back & 4th have several minibuses available for hire to get community groups to events, meetings or interesting places. The groups can include small school classes, charity groups, and care home residents, but whatever the group, we aim to accommodate you.

Our Minibuses hold up to 16 passengers and are wheelchair accessible and affordable. Our qualified, DBS checked volunteer drivers will get you where you want to go safely and with a smile.

Give us a call on 01789 471595 or visit our website to find out more:
www.wrccrural.org.uk



The Room

at Moreton Morrell

Suitable for parties, meetings and regular events

Broadband Wi-Fi available

To make an enquiry please email contact@tramm.co.uk



Visit: tramm.co.uk

Help us make The Villager!

Please continue to send your news, events, letters, photos, stories and comments by email to
cleetonjane@gmail.com

The deadline for the next edition is

29th May 2025

This is your magazine, please do contribute in any way you can.

Extra copies of The Villager are left in the church

and a copy is online at: www.moretonmorrell-pc.gov.uk