

# THE *Moreton Morrell* VILLAGER

June 2025



## **FUN FOR THE WHOLE FAMILY!**

**CRAFT STALLS PLANT STALL BBQ BAR CAFE  
BOUNCY CASTLE FACE PAINTING & MUCH MORE**

---

**STALLS AVAILABLE FOR MORE INFORMATION  
EMAIL [FRIENDSOFMORETONMORRELL@GMAIL.COM](mailto:FRIENDSOFMORETONMORRELL@GMAIL.COM)  
ORGANISED BY THE FRIENDS OF MORETON MORRELL CHARITY NO 519371**

# *The Parish Council*

---

*Chair:* Gerry Slora

*Vice Chair:* Eileen Edwards

*Councillors:* James Gordon, Robert James, Bernard Keavy & David Butler, Anne Parry

*County Councillor:* George Cowcher

*District Councillor:* Anne Parry

---

The next Parish Council meeting

will be held at The Room on

Monday 21<sup>st</sup> July 2025 at 7.30<sub>pm</sub>

and all are welcome to join

For more news from the Parish Council visit

[www.moretonmorrell-pc.gov.uk](http://www.moretonmorrell-pc.gov.uk)



Find us on  
**Facebook**

**JOIN THE NEW**

**MORETON MORRELL & MORETON PADDOX**

**FACEBOOK GROUP**

[www.facebook.com/groups/moreton.morrell](http://www.facebook.com/groups/moreton.morrell)

This group replaces the Facebook page which many of you will be a member of. Please follow the new group to keep up to date with news, events and information about the village.

# *News from the Parish Council*

---

The Annual Parish Meeting was held last month in The Room prior to the AGM and parish council meeting when the Chair, Cllr Gerry Slora expressed thanks to the community, the councillors, the clerk and contractors for their help and involvement in the village over the last 12 months, which reflected a particularly busy year across a wide range of activities and included:

- Maintenance of the playing field with the installation of a new bridge into the park, which is used extensively and greatly enjoyed by all villagers
- Repairs to several footpath stiles
- The start of a clearance programme on Farm Drive by a working party of willing volunteers
- Additional bollards by Stratford-on-Avon District Council to protect the entrance into the playing field in Oak Tree Close from parked vehicles
- Opening of the new classroom at Moreton

Morrell Primary School

- Adoption of the new Parish Plan by Stratford-on-Avon District Council
- Regular events in The Room at the church, which has become the new vibrant meeting place with a full events programme, including quiz's, Tasty Tuesday and clubs, such as the Gardening Club, which meets monthly.
- Parish-sponsored events included the introduction of a village Christmas Tree and lights with a buffet, carols and brass band, plus the VE Commemoration Event at the Black Horse. This was attended by over 100 people in the pub and garden, all enjoying their spam sandwiches and belting out a few old favourites from the end of WW11.
- The introduction of the Twenty is Plenty and Horse Box signage has helped improve road safety and emphasise speed restrictions

# *News from the Parish Council*

---

- Repairs to the Fountain Brickwork outside the School
- The project management and development of Pocket Park, with special thanks to David Edwards and all the villagers who have helped create this new, restful wildlife space by the church
- Special thanks to Jane Cleeton for keeping the flower planters full and watered throughout the year

The footpaths are a focus for this year, which have started to become overgrown and the woodwork has deteriorated. The steps which run along the school fence are also scheduled to be rebuilt.

Whilst the Village Hall remains closed, the parish council hopes that the trustees will have more success in the coming year to

bring this community asset back into operation.

The chair also highlighted that Moreton Morrell College has a new principal in Sara-Jane Wilkins, who has subsequently changed her management team and the council welcomes regular communication with her and the team. The Annual Lambing event proved particularly successful and the parish council welcomed the provision of family tickets for villagers.

The AGM followed the Annual Parish Meeting when Cllr Gerry Slora was re-elected as Chair and Cllr Eileen Edwards as Vice Chair.

At the main parish council the following was agreed:

- To split the annual community benefit from the Deer's Leap Solar Farm

## **Pick it up!**

Whatever some people may believe, there's no such thing as the dog poo fairy. So dog walkers, bag that poo - any rubbish bin will do.  
*(This includes Box Field)*

**Together let's put an end to this offensive, harmful litter.**

# *News from the Parish Council*

---

50/50 with Lighthorne Parish Council when commissioned

- Funds for the replacement and filling of entrance sign flower planters
- Application for a highways grant to review and improve the damaged verge by the old phone box on the junction of Brook Lane and Main Street.
- PC support for the college pre-application planning submission of Triangle Field

to include the transfer of the playing field to the parish council, plus a donation of £25k in addition to CIL money, a new permissive walking route around college land plus vehicle access via the new estate to the playing field.

- The approval of the Annual Accounts to 31<sup>st</sup> March 2025
- Approval of the Annual Return and Asset Register

**Date of Next Meeting**  
Monday 21<sup>st</sup> July in The Room

## Moreton Morrell Parish Council



# *District Councillor Report - Cllr Anne Parry*

---

## **Full Council**

The new municipal year kicked off with Full Council in May and I have been appointed to the planning and employment committees.

The next two years are set to be challenging ones in view of the development of the South Warwickshire Local Plan, and we are anticipating further information about a review of the 12 new settlement options and 24 strategic growth sites in the next few months, once the public consultation responses have been analysed.

In addition, the focus will also be on devolution plans for a single or twin unitary council, together with the changes at Warwickshire County Council.

Interesting and busy times are the way forward as local government enters a new era.

## **SDC Climate Change Fund**

Please note that the new Climate Change Fund is now open and there may be some projects for the church in terms

of lighting etc that could qualify for funding? Please see the link below for more information and to apply. There may also be initiatives of interest for Pocket Park? Further information is available via

[www.stratford.gov.uk/environment/climate-change-fund](http://www.stratford.gov.uk/environment/climate-change-fund)

## **Community Champions Scheme Launched**

Unsung heroes making a difference across Stratford-on-Avon District are being urged to step forward for a ground-breaking new scheme offering free support from local leisure facilities.

Everyone Active, which runs Stratford Leisure Centre, Southam Leisure Centre, Shipston Leisure Centre, Studley Leisure Centre and The Greig Leisure Centre in Alcester, run in partnership with Stratford-on-Avon District Council, wants to support projects which are tackling local issues and changing lives.

The award-winning operator launched its Community Champions scheme this month,

# *District Councillor Report - Cllr Anne Parry*

---

with the aim of building stronger communities and recognising the dedication of those who go above and beyond.

People involved in mentoring, promoting health and wellbeing, supporting inclusivity or leading environmental or cultural projects are being encouraged to apply. It can be a charitable initiative or a project that is small or targeted.

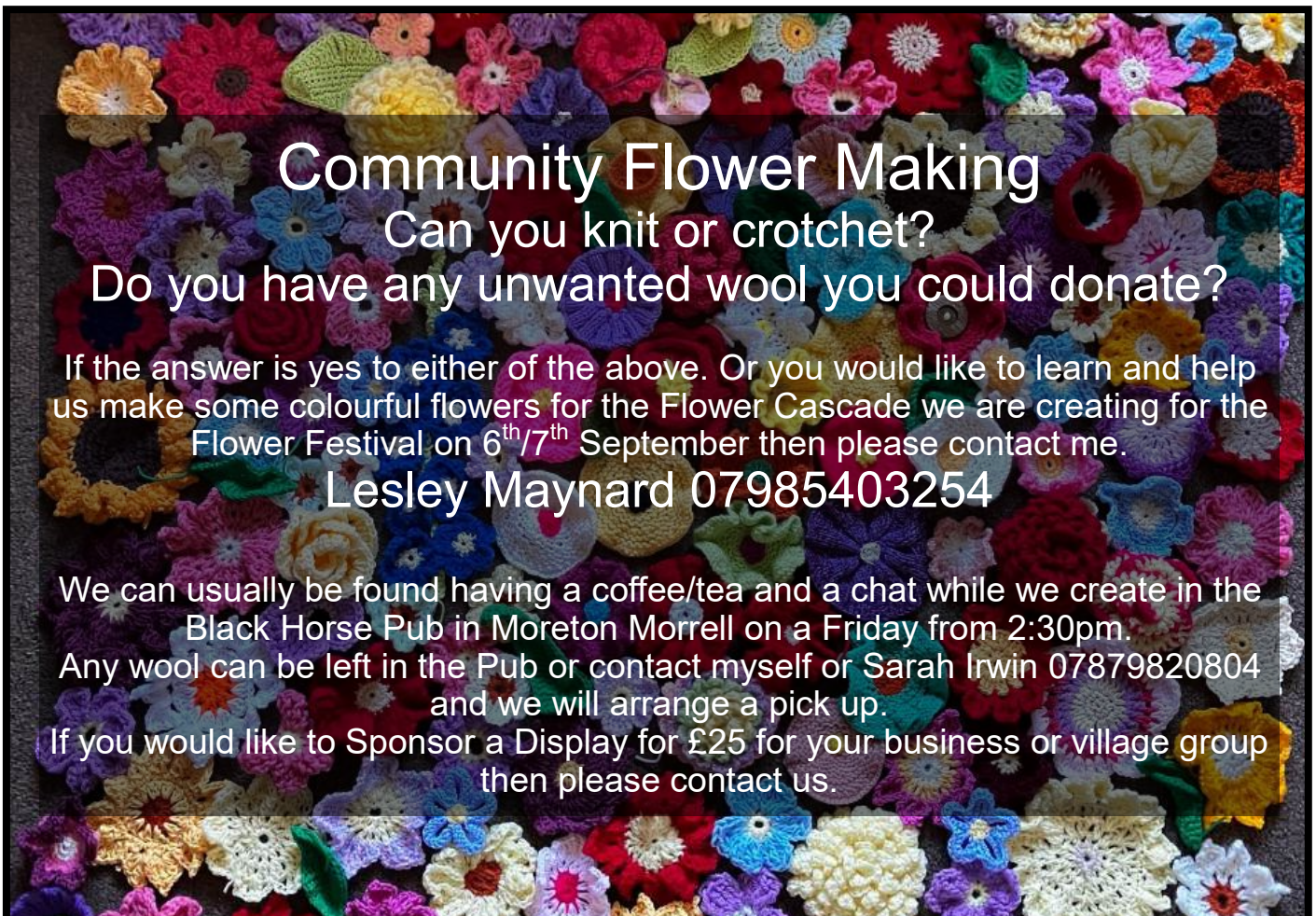
Those selected for the Community Champions scheme are also in with a chance of

being shortlisted for the Champions Awards in the autumn.

Please don't hesitate to contact me if you have any queries regarding district matters.

**Cllr Anne Parry**

[anne.parry@stratford-dc.gov.uk](mailto:anne.parry@stratford-dc.gov.uk)



**Community Flower Making**  
Can you knit or crotchet?  
Do you have any unwanted wool you could donate?

If the answer is yes to either of the above. Or you would like to learn and help us make some colourful flowers for the Flower Cascade we are creating for the Flower Festival on 6<sup>th</sup>/7<sup>th</sup> September then please contact me.

**Lesley Maynard 07985403254**

We can usually be found having a coffee/tea and a chat while we create in the Black Horse Pub in Moreton Morrell on a Friday from 2:30pm.  
Any wool can be left in the Pub or contact myself or Sarah Irwin 07879820804 and we will arrange a pick up.  
If you would like to Sponsor a Display for £25 for your business or village group then please contact us.

# *Your Church in Your Community*

---

## **Message from the Reverend Barry Jackson**

### ***Disappointments Set-Backs and Loss***

When chatting with a mum after school drop off in Moreton Morrell, she told me how her son had a meltdown that morning because they had only just arrived in time. He likes to get there early, because then he's allowed to do some colouring, and was very disappointed that they were running behind schedule.

Disappointment is a complex emotion that can involve a combination of frustration, sadness, loss, grief, and anger. We experience it when whatever happens in life doesn't match what we were expecting or hoping for. Disappointment is part of life because each day rarely turns out exactly how we would have wanted.

We might smile (or be deeply frustrated) at a child's tantrums over something that seems so minor, because as adults we have faced (or are facing) much deeper hurts and disappointments.

We have all been there at times in our lives... an unexpected bill that wipes out our savings, a setback at work, a holiday disaster, a breakdown in a relationship, the loss of someone we love, or even disappointment in our own behaviour... sometimes the word 'disappointment' does not even come close to describing the depth

of anger or loss we feel when life throws us something that we're not expecting.

The disappointments we experience and overcome in life, even the minor ones we experience as children, can be important stepping stones to help us build our resilience; our ability to bounce back.

Unfortunately, sometimes our disappointments can become straitjackets, and we can find it impossible to move beyond our anger, resentment or grief. Holding onto these feelings can stifle us and profoundly affect our lives, shaping behaviour and restricting positive emotions. When that happens, we often need the help of others to see what's going on in our lives and move forward.

I think that's one of the reasons Jesus gave his disciples a new commandment... 'Just as I have loved you, you also should love one another (John 13:34b). He knew his disciples would face enormous challenges and disappointments, be persecuted, have to deal with huge setbacks, and even be killed for following him. He knew that they would need each other, that they would need a community that was committed to helping each other.

One of the biggest disappointments we can face is the grief that comes from losing someone we love. Whilst death is a reality we all must face, losing someone is never easy, and a community that understands what we are going through can be a

# *Your Church in Your Community*

---

tremendous help. That's one of the reasons we offer the Bereavement Journey course\* for those facing that kind of loss.

Whatever hurts, losses, or disappointments you are carrying at the moment, I pray that we all find the people and the community we need to help us weather that storm and find a way to a brighter future.

*\* The next Bereavement Journey course is starting on the evening of Tuesday 3<sup>rd</sup> June at Kineton Primary school. More details in advert or from Rev Matthew Arnold at [mtr.arnold@googlemail.com](mailto:mtr.arnold@googlemail.com)*

*Rev Barry Jackson*

## **Report to the annual Parish meeting**

*John Moverley recently presented the following report to the annual meeting of the Parish Council.*

Thank you for the opportunity to provide a brief report on your church and to thank the Parish Council for its continued support most recently in terms of provision of better lighting along the church path leading to the Room. We also welcome the opportunity to include church information in the Villager.

Following the departure of the Revd Lynda Lilley, we went back into what is called an inter regnum, basically a period when lay members of the church take responsibility for arranging services, liaising on issues such as weddings and funeral etc. and dealing with

administrative issues, normally dealt with by the priest. At Moreton Morrell we are fortunate in having to hand, both to advice and take services, the Venerable Brian Russell. Whilst retired and living in Stratford, we see him now very much a villager!

When Lynda stepped down the diocese took a decision to re-organise responsibilities and late last year our church was joined with the Edgehill Group, overseen by the Reverend Barry Jackson and his team based at Kineton. This is now working well. Barry has been impressed with the amount of activity in and around our church and is getting actively involved. He has already forged even stronger links with our school and most Friday mornings he visits the parish, aiming to arrive early enough if he can for coffee at the pub, then joining the school for assembly before leading prayers in the church at 9.45am. It is a pleasure working with him and his team and I know he is keen to get involved with as many village activities as he can.

Our normal service pattern is for family communion on the first Sunday of each month with a Prime Time service led by lay members, and more informal, on the third Sunday. Both start at 10.30 and all are welcome. We are also looking at trialling a sung evensong as an occasional offering. As a church we are delighted to help co-ordinate the village Remembrance Day event and it was good to see so many

# *Your Church in Your Community*

---

people in attendance in 2024. We have had a packed church for the village carol service as well as for the school's one.

The Room continues to be a real hub for village activity, and we are delighted with that. The range of activities is extensive and whilst we would like to see more to help defray running costs, it has undoubtedly become an integral village asset, worth all that effort in fund raising for its building! It has also been good to see the Pocket Park become established on part of the un-consecrated land of the churchyard and we seek to work closely with the Wildlife Group in its further development. There is so much more I could say on activities but perhaps worth a special mention is Tasty Tuesday, now very much a community event each fortnight for villagers to enjoy lunch and a chat. Also, the Craft Fair held in the churchyard and church, now attracting a wide audience to it and generating much needed funds as well as a Flower Festival.

This year sees what is called the Quinquennial Inspection of our building by the Diocese. We already know that it will highlight the need to address dampness in the walls and almost certainly roof repairs. The issue as ever will be funding, but we are already seeing if we can access any grant support and thinking of more fund-raising activity. Whilst we are currently just balancing the books in terms of annual income and expenditure, this leaves nothing

for capital expenditure and sadly in recent years we have not been able to pay our full parish share to the Diocese. The Parish Share is our contribution to the costs of clergy to support our services and related activity. Currently our underpayment is recorded by the Diocese as a long-term debt!

However, these issues must not overshadow the great activity of our church and its link with the community. Thank you again to the Parish Council and indeed all villagers for your continued support to your church in your community.

*John Moverley*

## **Report from the Revd Barry Jackson to the annual meeting of the Parochial Church Council**

Dear Friends, since I was licenced for Moreton Morrell last November, I've been impressed by the enthusiasm of the great team there is here at Holy Cross. Because of the current service plan in the other churches I'm licensed to, I've rarely been able to get to Sunday services here, but on the few occasions I've been able to join you, the life and energy of the congregation are clear to see.

I'm very grateful to Brian Russell for his support on services and to everyone on the Prime Time team for their wonderfully creative services on a third Sunday. I know that both services have been a real blessing for the church here.

We are currently reviewing the service pattern across the group,

# *Your Church in Your Community*

---

and I hope to be able to join you on a Sunday more frequently from the autumn term.

- Whilst I've not been able to be with you on a Sunday, I've been able to be involved in other ways I'm regularly involved with Collective Worship in the school, and have enjoyed their amazing Harvest, Christmas and Easter services that they held in church. The St Peter's Players team from Kineton have brought their Bible story telling drama into Moreton Morrell School and Nick and Tracy have volunteered to help with this too.
- I loved being able to be there at the start of the construction of the Pocket Park. It is a great initiative, a fantastic space and a great example of church and community working together.
- I've had the privilege of hearing MM Community Choir at Carols in the pub and at the concert in school that raised money for the Pocket Park. You clearly have some gifted singers in the church and community.
- I've managed to make one of the excellent Tasty Tuesdays lunches, and hope to make more
- I enjoyed chatting with people at the recent Easter craft fayre, which had a great range of crafts, activities and delicious cakes available
- And I've enjoyed coming here to pray, initially on a Saturday

morning, but now at 9.45 on a Friday. The Friday prayer time here nicely follows on from the pupil led collective worship on a Friday morning, which is preceded by coffee in the pub at 8.45 and the chance to meet with some of the parents of the school children. The prayer tree often has new requests on it and I always take time to read and pray for the people mentioned.

I was very impressed by the Christmas flower arrangements done by the college and the creativity shown in the Angel tree and, at Easter, the Easter egg tree. There are some wonderfully creative and talented people in the church, so thank you for enriching the environment where we meet to worship.

I'm very grateful to the very able people on the PCC who give their time and talents to so many different services and activities. All that happens in the life of our church is only possible because of the amazing teams of volunteers who generously give their time, talents and energy.

Thank you for all you are doing. I look forward to working with you all in the coming years.

God Bless,  
Barry

## **Key dates for your diary at Moreton Morrell**

14<sup>th</sup> June – 11.30am – Memorial service for Molly Wyatt

# *Your Church in Your Community*

---

21<sup>st</sup> June – Summer fete

7<sup>th</sup> September – Flower Festival & Songs of Praise

## **Normal Service dates in June and July**

We will continue to publish in the Villager dates of services across the four parishes in Mid Fosse as well as at our own church, and these are as follows:

1st June – 9am Lighthorne (prayers), **10.30am Moreton Morrell**, 5pm Newbold Pacey (evening service)

8th June – 10.30am Newbold Pacey (communion), 10.30am Lighthorne service

15th June – 8.30am Newbold Pacey (morning prayer), **10.30am Moreton Morrell Prime Time**, 10.30am Chesterton (communion)

22<sup>nd</sup> June – 8.30am Newbold Pacey

(morning prayer), 10.30am Lighthorne (communion)

29<sup>th</sup> June – Outdoor service at Upper Lighthorne/ Lighthorne Heath 2pm

6th July – 10.30am Lighthorne (morning service), **10.30am Moreton Morrell**, 5pm Newbold Pacey (evening service)

13th July – 9am Lighthorne (prayers), 10.30am Newbold Pacey (communion)

20th July – 8.30am Newbold Pacey (morning prayer), **10.30am Prime Time Moreton Morrell**, 10.30am Chesterton (communion)

27th July – 8.30am Newbold Pacey (morning prayer), 10.30am Lighthorne (communion)

**Moreton Morrell is on**



**Discover your neighbourhood!**  
Visit [nextdoor.co.uk](https://www.nextdoor.co.uk) or download the app



## **Join Us for Tasty Tuesday**

Every other Tuesday  
at **The Room behind the Church in Moreton Morrell**

Come and enjoy a **FREE** community lunch.

We'll be serving  **piping hot soup, crusty bread, and delicious homemade  
desserts, along with tea and coffee.**

- ★ **Drop in for a coffee with friends**
- ★ **Enjoy a warm, welcoming atmosphere**
- ★ **Use our space to work – FREE Wi-Fi  
available**

### **Everyone is welcome**

Whether you're here for a meal, a chat, or a place to work.

For more information, email Tracy at: [Tracybenbow66@gmail.com](mailto:Tracybenbow66@gmail.com)

We look forward to seeing you there

# *Your Church in Your Community*

---



Join us for a joyful and uplifting celebration of your favourite hymns.  
A special service of music, memories, and floral beauty!  
Vote for your favourite hymn – classic, modern, or from your school days  
and we'll include as many as we can!



Stunning floral displays throughout the church  
Congregational hymn singing and readings  
Refreshments



Submit your hymn choices by : 31<sup>st</sup> July 2025  
via email to [nicolaatkins@gmx.co.uk](mailto:nicolaatkins@gmx.co.uk)

Bring your voices and help us fill the church with colour and song!



*Sunday 7<sup>th</sup> September*  
*Church of the Holy Cross*  
*10.30 a.m.*





# Grief is hard. Death can impact all of life.

The Bereavement  
*Journey*  
a place to talk

7 Sessions of films &  
discussion

Topics include:

- Attachment, separation & loss
- The pain & responses of grief
- Anger & guilt
- Coping with others' reactions
- Delayed & suppressed grief
- Adjusting to change
- Moving forward healthily
- Faith questions – a Christian perspective (optional)

To find out more visit:  
[thebereavementjourney.org](http://thebereavementjourney.org)

**Tuesday evenings**  
**from 3rd June, 7-9pm**  
at Kineton Primary School

Free of charge

Book by contacting  
Matthew Arnold

07368 206182 or  
[mtr.arnold@googlemail.com](mailto:mtr.arnold@googlemail.com)

# *From the Allotments*

---

This is always a great time on the allotments. There is a hive of activity both sowing and planting as well of course cultivations and weeding. This year has produced an extremely dry period with no rain. I am sure readers will have enjoyed the prolonged days of sunshine, but growing plants certainly have not. Of course, to our farmers, the situation has been critical and sadly some crops have failed and others will have very depressed yields. We feel very much for them.

We have new allotment holders this year and it is good to see them working hard and developing the plans for their plots. To remind readers, the Parish Council let the allotment land from Warwickshire County Council. In turn the Parish Council sublet the management of the allotments to the Moreton Morrell Allotment Association. We are grateful to the Parish Council for the support they give as the allotments are undoubtedly a valuable asset to the community. There are a total of 30 full plots offered as either full plots or as half or quarter ones. When joining, the members are asked to sign a tenancy agreement with the allotment year running up to 30<sup>th</sup> September. We then hold an annual meeting of the association in November each year. Accounts

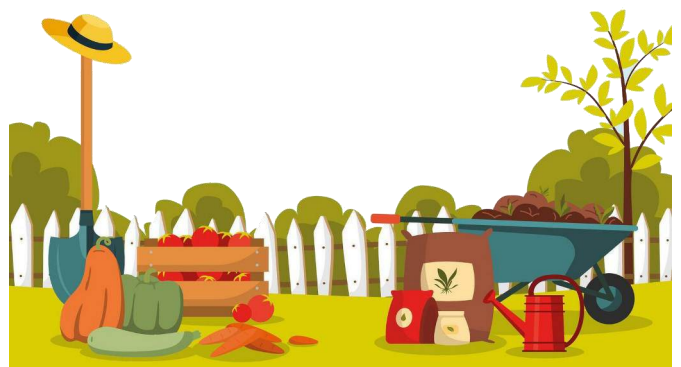
are presented. As a non-profit organisation we seek to cover annual expenditure with rents received from occupiers.

A few weeks ago, we received a visit from an officer in the property department of Warwickshire County Council, the first time since I have been chairman. I, together with the Parish Clerk, were in attendance. It is understood that a report will be produced for the Parish Council as first tenants of the land which will be discussed at their July meeting.

Finally, due to popular demand, a few lines of verse!

*The kiss of the sun for pardon  
The song of the birds for mirth  
You are nearer God's heart in a  
garden  
than anywhere else on earth*

*John Moverley*  
[John@dunmovin.co.uk](mailto:John@dunmovin.co.uk)





# **FLOWER FESTIVAL**

**SATURDAY 6TH &  
SUNDAY 7TH SEPTEMBER**

**JOIN US FOR A STUNNING CELEBRATION  
OF FLORAL CREATIVITY!**

**★ HIGHLIGHTS INCLUDE:  
A BEAUTIFUL COMMUNITY-KNITTED AND  
CROCHETED FLOWER CASCADE**

**FABULOUS FRESH FLOWER  
ARRANGEMENTS THROUGHOUT THE  
CHURCH**

**REFRESHMENTS AND RAFFLE**

- **FREE ENTRY – DONATIONS WELCOME IN  
SUPPORT OF CHURCH MAINTENANCE**

**CHURCH OF THE HOLY CROSS  
MORETON MORRELL**



The Room  
At Moreton Morrell

# TRAMM

## Calendar 2025

### Fundraising and Community Events

Friday 20 June	Mid-Summer Quiz Night
Weekend 6-7 September	Flower Festival
Sunday 12 October	Autumn Craft Fair
Monday 1 December	Wreath Making
Sunday 14 December	Carols in the Churchyard

### Regular Bookings and Activities

First Monday each month	Gong Bath
Second Monday each month	Gardening Club
Selected Tuesday lunchtimes	Tasty Tuesdays
Every Tuesday evening	Village Choir
Every other Thursday Evening	Meditation Circle
Thursday 1 May	Local Elections

Visit [www.tramm.co.uk](http://www.tramm.co.uk) for more information

Available for hire from £12 per hour

Find us behind The Church of the Holy Cross,

Moreton Morrell, CV35 9AL



# OUR OPENING TIMES

## **Monday - Thursday**

16:00-23:00

## **Friday**

10:30-23:00

(we are open at 8:30am during school terms)

## **Saturday**

11:00-23:00

## **Sunday**

11:00-20:00

@THEBLACKHORSEMM

## Nature Watch

---

As I scribble this it's May. I always think that April into May sees our countryside at the peak of beauty. The froth of Cow Parsley reaches up to try and touch the white flowers of Hawthorn along the hedgerow. The birds are singing and nesting everywhere. Its an explosion of life and colour. Love to see the Swallows, Martins and Swifts zooming across the sky. On the downside they say its the driest Spring in almost seventy years. That must mean mud for Swallows and Martins to build their nests is really hard to find. That can lead to smaller and weaker nests that can fail. I've seen a pair of Martins using their last year's nest so fingers crossed for them all. I'm hearing that out in the fields wheat and barley are suffering with the lack of rain.

Talking of water, or rather lack of it, I've just put in another pond, just a small puddle pond. In the sunshine it turned green in a week so I added lots of pond weed and within another week it was crystal clear. Tiny Water Beetles arrived within two days. They fly to look for new water which is a risky thing to do. As they fly they look for

shiny water below. Many get it wrong crashing down on greenhouses and once on my parked car windscreen. I must have about twenty Water Beetles that safely splashed down in that little pond. Robins, Blackbirds, Greenfinch and Goldfinch have all bathed in the shallow edges. Even a small pond is well worth having.

I was hoping the Red Kites would nest in the big old Pine tree just inside the Park but every time the Kites tried to land in the tree the Carrion Crows, about ten of them, mobbed them. So I don't think nesting here is worth the hassle.

Meanwhile, back in the garden, I've started growing a new crop for the salad bowl.- I bet you can't guess what it is . . . . . Dandelions. Ok stop laughing! These much dug up and sprayed plants are packed with goodness. They contain vitamins A,C,E,D and K with small amounts of Vitamin B. They also have antioxidants and anti-inflammatory properties. The plant also has iron, sodium, copper, zinc and potassium. They may have more goodness than many of

## Nature Watch

---

the veg we grow. The downside is they may not be suitable for people taking blood thinners or people on gall bladder meds. Other than that put your sprayer down and try some.

The Bluetits in both nest boxes (pointing north by the way) are flat out feeding chicks mostly with Caterpillars. With each Chick able to eat up to one hundred Caterpillars a day the parents have their work cut out. No wonder they don't have long lives.

I got a bit manic this morning as a recently arrived pair of Spotted Flycatchers were investigating the gap on top of the nest box under the eaves - possibly a nest sight on top of a nest site! Then a Starling turned up to see what was happening. The Blue-Tits just wanted them all to go away. Great view from just outside the bedroom window.

Now before I go I'd like to give thanks to the people who were here before me. The Nature Notes were started many years ago by a lovely chap called Walter Taylor. I met him a couple of times, he always seemed to be smiling.

When he sadly passed his daughter, Linda Stevens, took on the job. After a while I seemed to get tricked into it. Without Walter the Notes wouldn't have started and without Linda typing up my scribble and then passing it on to other villages via the computer machine there notes wouldn't exist. Linda is now moving south to be near her family. I can't thank you enough Linda for all you've done to make the Notes happen. Krys in Ashorne I willing to take over the typing up so we continue. Good luck with that Krys. Couldn't have done it without you Linda



# *Village Wildlife Group*

---

We're delighted to share some exciting progress from the Village Wildlife Group.

## **New Estate Nature Walk Approved**

The college has formally offered a new 2.2 km circular walk around its estate to the Parish Council as part of a planning agreement. Over the coming weeks, local wildlife enthusiasts and experts will walk the route to begin identifying areas for habitat improvements. With UK wildlife in steep decline, this is a fantastic opportunity to protect and enhance our natural surroundings for all to enjoy. I would also add that the new college management have been extremely supportive and are very keen to engage with the community in positive ways.

## **Swift Box Expansion Project**

Six swift boxes are now installed on the church tower. Following a village survey, we've also identified 15 more potential sites. We'll be writing to property owners shortly and hope to supply new boxes—made in partnership with college students—and assist with installation. Swifts travel

5,000 miles from Africa to breed here, but their numbers have dropped by 60%. They need our help more than ever.

## **Pocket Park Progress**

Our pocket park continues to flourish! A new bird bath and additional water sources have been installed, and further nectar-rich planting is planned. The space is already attracting more wildlife and regular visitors.

We'll be arranging ongoing maintenance and will share updates on social media.



## *Village Wildlife Group*

---

We're also considering forming a small "Friends of the Pocket Park" group to help care for it long term.

If you're interested in joining, please email David at

**david.l.edwards@icloud.com.**

Together, we're making real progress for both wildlife and the wider community—thank you for your continued support!



---

## *Gardening Group*

---

It's been a busy start to the year with some excellent speakers and a lovely trip out to the beautiful Cedar House Gardens in Wasperton to see the spring flowers this April.

Our May speaker was Nigel Freeman who is a guide at RHS Wisley, his talk on the history of the gardens and slides of some of the highlights has wetted our appetite for our trip to these beautiful gardens planned for June 29th.

The trip to Wisley is on Sunday

June 29th leaving the village at 8.45am. The trip is for Members only and is £12.50 for travel , entrance fees covered by our RHS membership. Hopefully the weather will be kind and we will have a fabulous trip.

If anyone is interested joining the group , and coming to Wisley, annual membership fees are £25, please contact me on [dedward@btinternet.com](mailto:dedward@btinternet.com).

Happy Gardening  
Eileen Edwards ( Chair)

# *Newbold Pacey & Ashorne WI*

---

April marks the first month of our membership year and we've been delighted to register 33 members so far which gives us a firm income base to deliver our exciting programme of speakers and activities for the next 12 months.

At our April meeting we welcomed local author, Anne Harrison. Anne shared her journey from abandonment at birth, through foster care and institutions to adulthood which she documented in her book 'Call Me Auntie'. Her book was so titled as this is what her mother asked to be called, when Anne eventually tracked her down. Also, interestingly, Anne was the first black woman police cadet in Warwickshire. Her police career didn't last too long and she went on to have a 34-year career in Social Work, supporting children from similar backgrounds to herself.

In May we held our Annual Meeting to elect our WI Committee; look back on the past year of fun, friendships, outings and workshops; hear our President Vicki's vision for 2025/26 and enjoy tea, cake and a couple of games of bingo!

President Vicki said: "I am super excited about the forthcoming year, a fantastic programme of events, our summer outing and our Christmas celebration in our very own village hall – there is so much to look forward to, being part of this very special group of ladies."

For our Thursday 12 June meeting we are dressing up for a Royal Garden Party and having a cream tea whilst we hear of the experiences of Ian Scott-Hunter as a royal footman. In July we are having a go at Origami with tutor Rakha Madahar and in August we're hoping to have a day out at Waterperry Gardens.

Our Craft Groups continue to meet on Tuesdays with knit and natter in the morning and trying out new crafts with our (Arts, Crafts & Knowledge Sharing) ARKS Group in the afternoon. We've tried crochet, iris folding and made fabric quilted baskets, in the coming weeks we'll be having a go at watercolour painting, fabric applique and scrappy landscapes. Our Walking Group has been out and about trying different routes along canal tow paths, through villages and woodland. We are so lucky to have such a beautiful and accessible county to explore.



# *Newbold Pacey & Ashorne WI*

---

We are always pleased to welcome new members. We meet on the 2<sup>nd</sup> Thursday of each month, 7:30pm – 10pm in Ashorne Village Hall. Our membership years starts in April. Subs are £50 for a year of speakers/workshops and enjoying the company of like-minded women. Or come as a guest to try us out, £5 per meeting including raffle, homemade cake and a cuppa.



Our monthly Community Coffee Mornings are as popular as ever so if you are passing Ashorne Village Hall around 10am on the first Saturday of the month, do pop in.

Contact Trish by phone for a chat or email: [npandawi@gmail.com](mailto:npandawi@gmail.com) if you want to find out more.

Trish Handsley  
01926 651978 / 07919 392588

Newbold Pacey & Ashorne  
WI [Npandawi@gmail.com](mailto:Npandawi@gmail.com)

Facebook:  
Newbold Pacey & Ashorne WI –  
Warwickshire

Instagram:  
[@Newboldpaceyandashorne](https://www.instagram.com/Newboldpaceyandashorne)

---

## *Carers4Carers*



**Omega...**  
ENDING ISOLATION | ENDING LONELINESS

### **Finding support through supporting each other**

**Carers4Carers** monthly meeting held at **Kineton Village Hall, 10:30 am to 12 noon**. We'd love to welcome you to our carers' group for refreshments, chat and mutual support. Please bring along your loved ones - they can join our Companionship Group while we meet.

**Friday 27th June** - Come along and discover the multitude of disability aids now available.

**Friday 25th July** - speaker to be confirmed at the time of going to press.

For further details about our group or help with transport arrangements to/from our meetings, please contact Gillian on 07947 893504, send an email to [kcarers4carers@gmail.com](mailto:kcarers4carers@gmail.com), or explore our website [www.carers4carersonthefosse.org.uk](http://www.carers4carersonthefosse.org.uk).

# Transport

## Dial a Ride UBUS service in Moreton Morrell

The UBUS dial a ride community transport service operates in Moreton Morrell and surrounding areas on Mondays, Wednesdays & Fridays between 09:30 - 14:30.

UBUS is available to anyone who struggles to access public transport due to mobility issues, health problems or due to infrequent or no public transport.

Travel locally or into Stratford upon Avon to go shopping, visit friends or attend social groups.

Single journey fare: £2.90 | Return fare: £5.80

To register with UBUS or for more information please call 01789 264491 between 09:30 - 14:30 on weekdays.



## COMMUNITY TRANSPORT SERVICE

Our volunteer drivers can take you to medical appointments, lunch clubs, groups, activities and to visit family and friends.

**01789 262889**

[transport@vasa.org.uk](mailto:transport@vasa.org.uk)



Areas covered: **Stratford, Warwick, Leamington Spa, Kenilworth, Southam, Alcester, Shipston & surrounding villages.**

**vasa**

reducing isolation within our communities

## RELIABLE SERVICE

All our volunteer drivers are enhanced DBS checked, referenced and carry ID.

## WHAT DOES IT COST?

You pay your volunteer driver **45p per mile** and a **£3 admin fee** to help us sustain the service. **Two hours of waiting time** is included in the cost of your booking.

## HOW TO BOOK A JOURNEY

Our booking line is open Monday to Friday between 9.30am & 3pm.

**01789 262889**

[transport@vasa.org.uk](mailto:transport@vasa.org.uk)

## WE NEED MORE VOLUNTEER DRIVERS!

Have you got some spare time during the day? Could you help this invaluable service in your community? You can choose to do as many journeys as you like each month. 45p mileage costs paid.

Call 01789 262889 or email

[volunteer@vasa.org.uk](mailto:volunteer@vasa.org.uk).

Supporting Stratford District Residents since 1979. Charity No: 4067584



## HJ DÉCOR: PAINTER & DECORATOR, Interior & Exterior work undertaken

### Free Estimates

Reasonable prices and friendly service

No job too small

Lyndon Bufton

Mobile: 07531005579 Phone: 01926 737079

---

## We need your clothes and shoes

Don't forget the school has a hungry clothes monster... or a recycling bin if you prefer!

Have your children outgrown their clothes or shoes or perhaps you need some space for your summer wardrobe! If you have any bedding, clothing or shoes that no longer fit or you simply no longer want or can be bothered to repair! why not feed the blue bin located opposite the main reception entrance to school.

The bin is emptied by an external company and the school is paid an amount depending on the weight of the clothing.



---

**The Silver Line** is a helpline for older people that offers information, friendship and advice 24 hours day, 365 days a year.

Originally founded by Dame Esther Rantzen, it is the only national, free and confidential helpline for older people in the UK.

The Silver Line also offers telephone and letter befriending by matching up a Silver Liner to a volunteer for regular conversation.

So if anyone is lying awake at night - or feeling lonely at anytime - or is worried about a problem that they have - and think that a chat with someone friendly who cares might help, **please call The Silver Line on 0800 4708090** [www.thesilverline.org.uk](http://www.thesilverline.org.uk)



## Stuck for transport for your group?

Back & 4<sup>th</sup> have several minibuses available for hire to get community groups to events, meetings or interesting places. The groups can include small school classes, charity groups, and care home residents, but whatever the group, we aim to accommodate you.

Our Minibuses hold up to 16 passengers and are wheelchair accessible and affordable. Our qualified, DBS checked volunteer drivers will get you where you want to go safely and with a smile.

Give us a call on 01789 471595 or visit our website to find out more:  
[www.wrccrural.org.uk](http://www.wrccrural.org.uk)



## The Room

at Moreton Morrell

Suitable for parties, meetings and regular events

**Broadband Wi-Fi available**

To make an enquiry please email [contact@tramm.co.uk](mailto:contact@tramm.co.uk)



Visit: [tramm.co.uk](http://tramm.co.uk)

## Help us make The Villager!

Please continue to send your news, events, letters, photos, stories and comments by email to  
[cleetonjane@gmail.com](mailto:cleetonjane@gmail.com)

*The deadline for the next edition is*

**25<sup>th</sup> July 2025**

*This is your magazine, please do contribute in any way you can.*

Extra copies of The Villager are left in the church

and a copy is online at: [www.moretonmorrell-pc.gov.uk](http://www.moretonmorrell-pc.gov.uk)